



RADIO DAY BY THE BAY

2026 VINTAGE RADIO AUCTION CATALOGUE

*Auction Item Preview for live auction
taking place on July 18th 2026*

Items 2601 – 2635 (more to come)

ITEM 2601

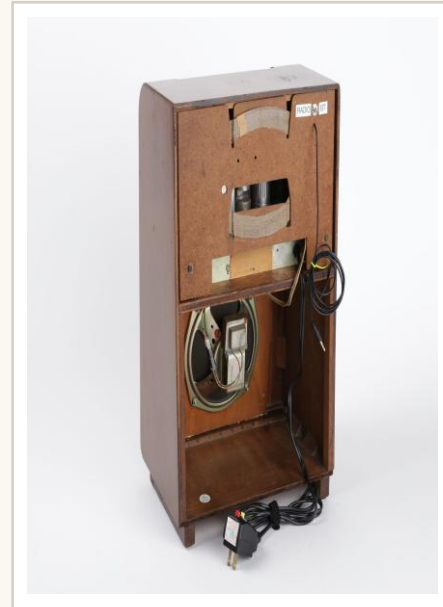
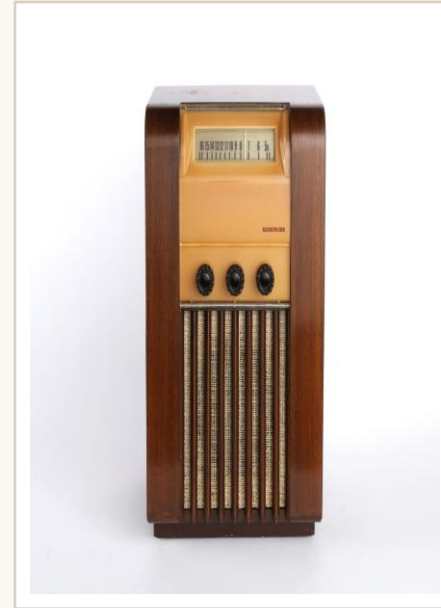
Seiberling 576

1940s

STARTING BID

\$140

A distinctive 1940s mini-console design Seiberling table radio featuring a vertical Art Deco cabinet design. Its streamlined styling and compact footprint make it an attractive example of post-war American radio design. Bluetooth equipped.



ITEM 2602

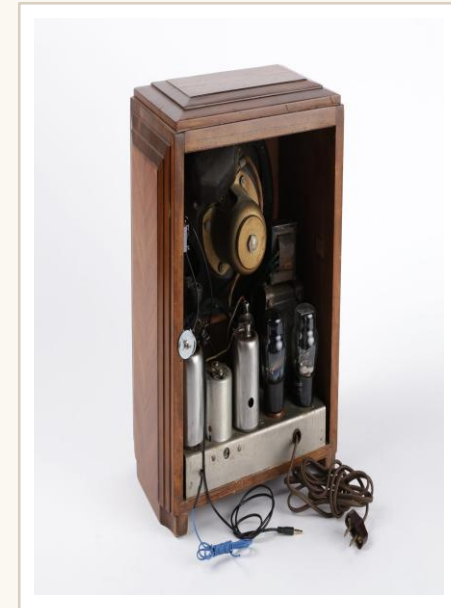
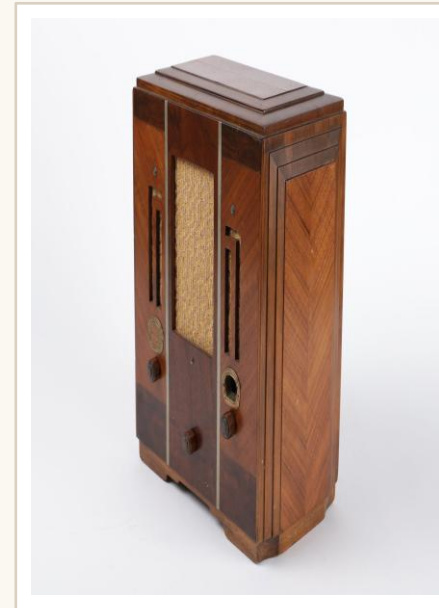
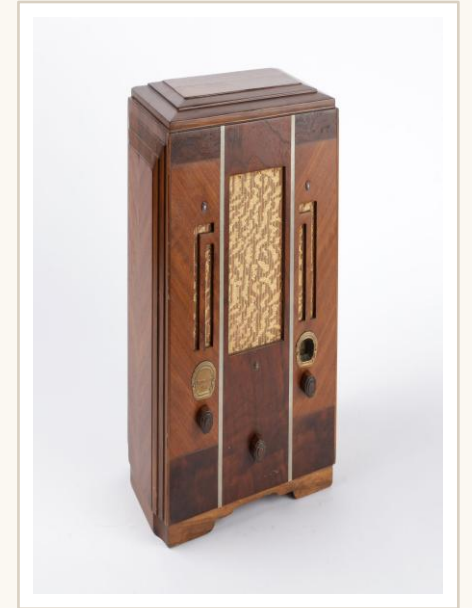
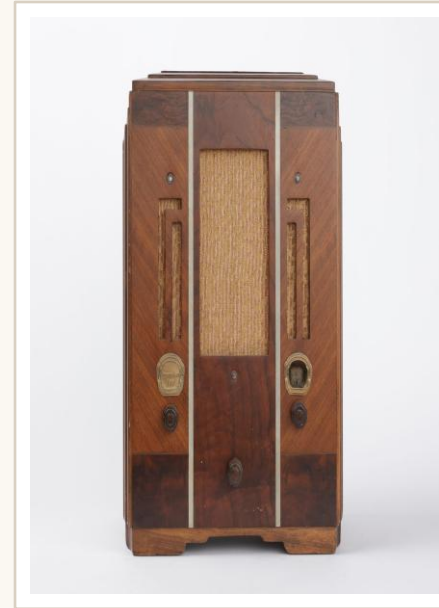
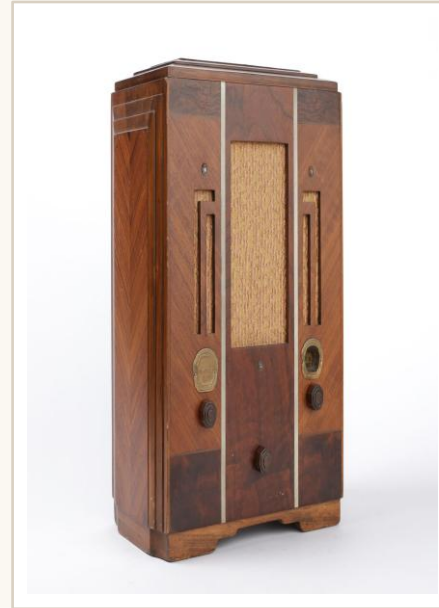
Atwater-Kent 185A

1934

STARTING BID

\$200

An elegant Atwater Kent upright table radio from 1934 featuring a striking herringbone-pattern cabinet and distinctive vertical accents. This five-tube superheterodyne receiver offers both AM and shortwave reception and is equipped with a large speaker that delivers impressive sound. A fine example from one of radio's most respected early manufacturers. Bluetooth equipped.



ITEM 2603

Majestic 7P420

1940s

STARTING BID

\$120

Known as the "Mighty Monarch of the Air," this Majestic vacuum tube portable radio features a luggage-style cabinet with distinctive period styling. Portable radios of this era remain popular with collectors for their unique combination of functionality and design. Bluetooth equipped.



ITEM 2604

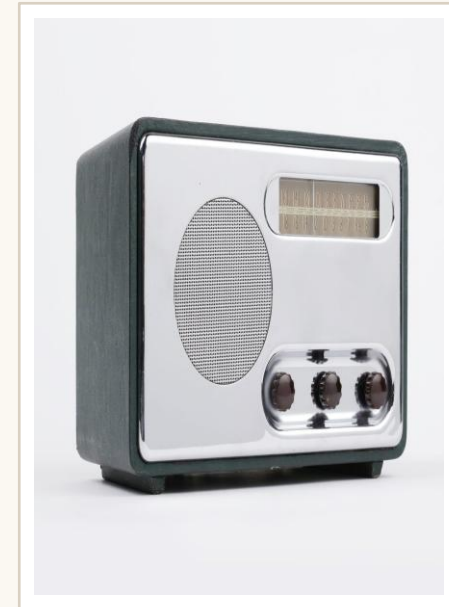
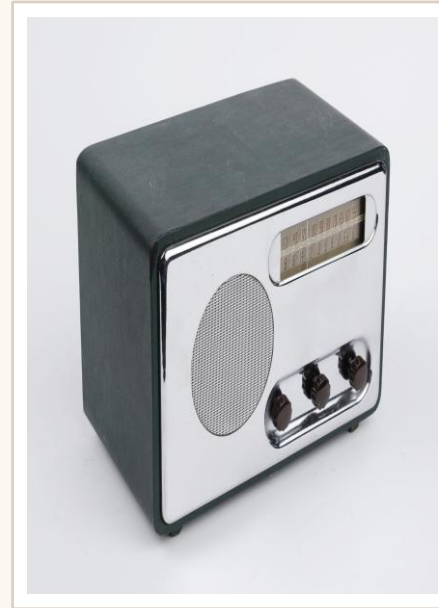
Detrola 568

1946

STARTING BID

\$225

A classic post-war Detrola tabletop radio featuring an eye-catching dark green leatherette cabinet and chrome front panel. Its colorful presentation and streamlined styling make it a standout display piece. This radio adorns the cover of the Radio Redux: Listening in Style book by Philip Collins. Bluetooth equipped.



ITEM 2605

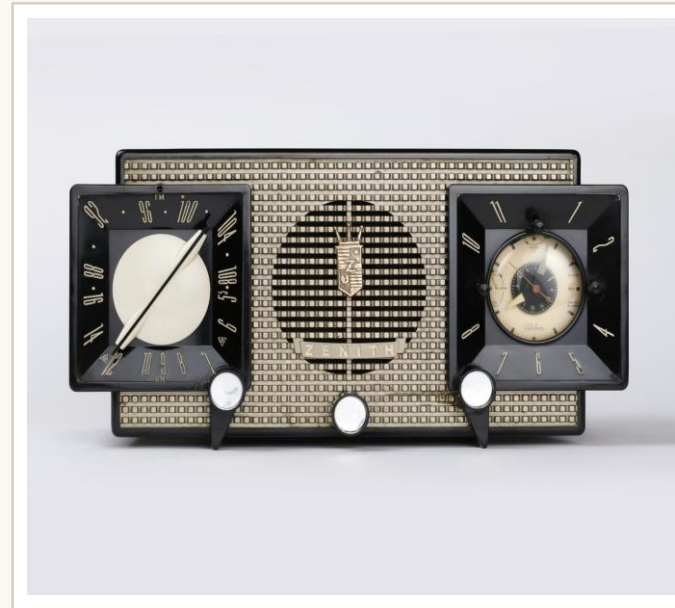
Zenith J733

1950

STARTING BID

\$140

This Zenith clock radio combines the company's well-known quality with practical bedside functionality. Housed in a brown Bakelite, well-accented cabinet, it represents the growing popularity of clock radios in American homes during the early 1950s. Great sound! Bluetooth equipped.



ITEM 2606

Philco "Baby Grand" 84B

1935

STARTING BID

\$135

One of Philco's most recognizable designs, the Baby Grand cathedral radio remains a favorite among collectors. The graceful arched cabinet and traditional grille design capture the look of radio's golden age. Bluetooth can be added.



ITEM 2607

Crosley "Dashboard" 10-135

1950

STARTING BID

\$140

Finished in striking turquoise with chrome trim, this Crosley "Dashboard" radio embodies the optimism and style of the early 1950s. Its automotive-inspired design makes it a fun and highly collectible display piece. Bluetooth equipped.



ITEM 2608

Montgomery Ward Airline GEN-1803A

1960

STARTING BID

\$120

A stylish Airline transistor clock radio produced for Montgomery Ward. Featuring a solid teal-colored plastic cabinet and clean mid-century lines, it reflects the transition from tube technology to the transistor age. Bluetooth equipped.



ITEM 2609

General Electric 915

1959

STARTING BID

\$130

A sought after vivid pink GE clock radio from the late 1950s. Its molded plastic cabinet and vibrant color make it a wonderful example of the era's consumer design trends. Bluetooth equipped.



ITEM 2610

Stewart-Warner "Varsity" 97-57

1938

STARTING BID

\$140

A distinctive Art Deco radio featuring Stewart-Warner's unique "Varsity" styling. The wave-pattern grille and Machine Age design elements make this an appealing example of late-1930s industrial design. Bluetooth addition available.



ITEM 2611

Stewart-Warner 01-6D

1938

STARTING BID

\$200

This vintage mahogany Stewart Warner lowboy Chippendale-inspired end table radio features a distinctive claw-foot cabinet design. Bluetooth equipped.



ITEM 2612

Atwater-Kent 447

1933

STARTING BID

\$250

This is a vintage tombstone radio. It features a wooden cabinet with intricate inlay banding and burl highlights. The radio is a seven-tube superheterodyne AM and shortwave receiver equipped with Bluetooth.



ITEM 2613

Stewart-Warner

1940s

STARTING BID

\$250

Stewart Warner half-circle occasional table radio featuring a drop-front panel and cabriole legs. Bluetooth equipped.



ITEM 2614

Conrad-Johnson PV3 & MV75A

1981-1982

STARTING BID

\$1,250

A highly regarded serviced and working vacuum tube audio system from Conrad-Johnson, one of America's premier high-end audio manufacturers. The legendary PV3 preamplifier is celebrated among audiophiles for its musical presentation and enduring reputation in tube audio circles. The MV75 produces 75 Watts per channel.



ITEM 2615

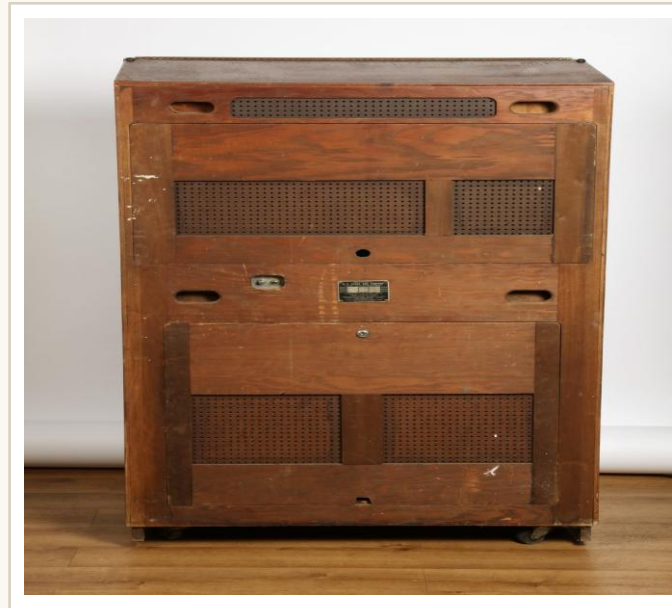
Evans 245 Jubilee

1952

STARTING BID

\$1,200

This is a vintage 1952 Evans Jubilee jukebox, a seldom seen model produced by H.C. Evans & Co., It is designed to play 45 RPM records and features distinctive wooden cabinetry with illuminated glass accents. The machine operates on a coin mechanism, accepting nickels, dimes, and quarters.



ITEM 2616

Pilot H384

1938

STARTING BID

\$450

This seven-tube superheterodyne with rich audio performance has a large low-profile cabinet and elegant dial design, making it an impressive example of late-1930s radio styling. Collectors appreciate the attractive appearance, shortwave capability, and solid performance. This radio commands attention as both a decorative display piece and a representative example of the international listening craze that captivated radio enthusiasts before World War II. Bluetooth capable



ITEM 2617

Crosley 11-109U

1951

STARTING BID

\$165

This is a 1951 Crosley "Decorator Model" tube radio. The radio features a distinctive "picture frame" design with a grid grille, gold accents, and an original dark green finish. Bluetooth equipped.



ITEM 2618

Setchell Carlson 458RD

1948

STARTING BID

\$140

This is a 1948 Setchell Carlson "Dor-A-Fone," a vintage AM radio that also functions as an intercom. The Bakelite cabinet is designed to resemble a cash register, featuring four push buttons on top for intercom functionality. It utilizes a four-tube superheterodyne circuit for reception and two-way communication.



ITEM 2619

Zenith R512R

1954

STARTING BID

\$130

This is a Zenith "Broadway" model radio, manufactured in a distinct burgundy color. It features a plastic "Oxblood" cabinet, ivory-colored push buttons, and a decorative gold-colored metal grill. These radios are known for their lighted tuning dial and functional push-button interface. Bluetooth equipped.



ITEM 2620

Montgomery Ward Airline 62-445

1937

STARTING BID

\$160

This is a Montgomery Ward Airline "Teledial" radio. The Art Deco case is constructed from ivory-colored Plaskon. The radio features a unique "Teledial" tuning system designed like a rotary telephone dial with 10 push buttons. It is a 5-tube superheterodyne table model radio designed for the broadcast band. Bluetooth equipped.



ITEM 2621

DeWald

1946

STARTING BID

\$130

This radio features a distinctive white bakelite case and a woven grill. It is a 5-tube superheterodyne receiver designed for broadcast reception. Bluetooth equipped.



ITEM 2622

Belmont 6D111

1946

STARTING BID

\$120

A post-war Belmont tabletop radio featuring classic streamliner styling and attractive proportions. Updated with Bluetooth capability, it offers vintage appearance with modern listening convenience.



ITEM 2623

DeWald

1940s

STARTING BID

\$150

An attractive mid-century DeWald radio showcasing an exquisite marbelized styrene case design with the clean lines that made the brand popular with collectors. Updated with Bluetooth capability for everyday enjoyment.



ITEM 2624

Zenith 6-S-439

1940

STARTING BID

\$250

A traditional wooden tabletop model from 1940 featuring streamlined Art Deco styling. Equipped with automatic push-button tuning and multiple reception bands, it represents Zenith's reputation for innovation and performance. After sale, Bluetooth available.



ITEM 2625

Zenith 6-S-527

1941

STARTING BID

\$250

This Zenith Art Deco tube radio features a polished walnut wood cabinet and a brass bezel with five push-button selectors and three knobs for tuning and volume control. It is a six-tube superheterodyne receiver capable of picking up both AM broadcast and shortwave bands. This is an excellent example of Zenith's pre-war production. Bluetooth may be added upon request.



ITEM 2626

Peerless 7-A

1928

STARTING BID

\$100

A beautiful Bluetooth equipped and amplified Peerless cathedral-style speaker from the late 1920s featuring the architectural design that defined early home radios. Updated with modern capability while retaining its classic appearance.



ITEM 2627

Philco PT-61

1940

STARTING BID

\$275

Known as the "Pagoda" due to its distinctive cabinet design, the PT-61 is one of Philco's most recognizable models. Constructed from multiple veneers and produced in limited numbers, it remains highly sought after by collectors. Updated with Bluetooth capability.



ITEM 2628

Northern Electric "Midge" 5708

1953

STARTING BID

\$150

A compact Canadian-made Bakelite radio featuring Northern Electric's distinctive "bullseye" speaker grille. Small in size but full of character, the Midge is a favorite among collectors of post-war radios. Bluetooth equipped.



ITEM 2629

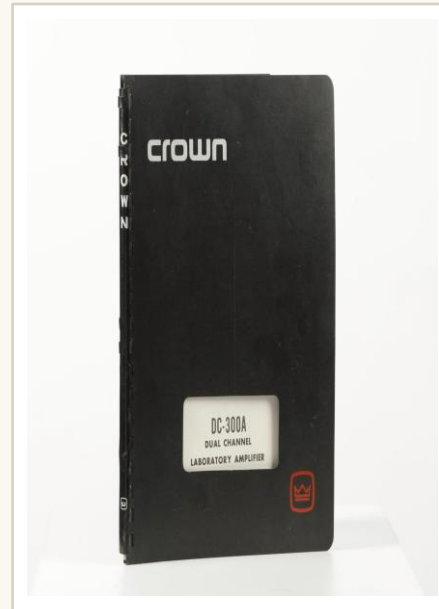
Crown OC-150A & IC-150A & DC 300A

Late 1970s

STARTING BID

\$900

A serviced and working professional-quality Crown audio system consisting of the OC-150A output control console, IC-150A solid-state preamplifier, and DC 300A power amplifier. 150 Watts per channel. Designed for both studio and high-fidelity applications, these components reflect Crown's reputation for durable, precision-built audio equipment.



ITEM 2630

Zenith "Cube" 5-F-233

1938

STARTING BID

\$250

A classic Zenith "Cube" radio featuring the company's famous Black Dial and a compact walnut cabinet. With both AM and shortwave reception, it remains one of Zenith's most recognizable tabletop designs. Bluetooth equipped.



ITEM 2631

Zenith 5-S-119

1937

STARTING BID

\$250

Featuring Zenith's iconic multi-colored Black Dial, the 5-S-119 is among the company's most collectible tabletop radios. Its attractive cabinet and classic styling make it a centerpiece in many collections. Bluetooth can be added.



ITEM 2632

Zenith "Cube" 5-R-216

1937

STARTING BID

\$200

A compact Zenith tabletop radio featuring the company's signature Black Dial styling and walnut cabinet. The Cube series remains popular for its combination of performance, size, and distinctive appearance. Includes Bluetooth capability.



ITEM 2633

Sonora WAU-243

1939

STARTING BID

\$150

An outstanding example of late-1930s Machine Age design. The asymmetrical Bakelite cabinet and large dial give this Sonora a dramatic presence that continues to attract collectors. Includes Bluetooth capability.



ITEM 2634

General Electric H-520

1939

STARTING BID

\$120

One of the most recognizable Art Deco Machine-Age radios ever produced. The H-520's turbine-inspired dial and streamlined styling have made it a perennial favorite among collectors of pre-war radios.



ITEM 2635

Artone AR-120

1990s

STARTING BID

\$350

This AR-120 is a modern French reproduction of the classic Spartan XXX 7 sided peach mirrored radio. Made in the 1990s, this is an excellent reproduction radio and highly sought after. Combining decorative design with audio functionality, it offers a distinctive alternative to traditional radio styling. Includes Bluetooth capability.

