



California Historical Radio Society

Presents

Radio Day Live ! – Annual Auction

July 22, 2023

Part 1



Bluetooth Ready

Some sets have an added Audio Input.

A Bluetooth Receiver can be connected to the Audio Input.

Bluetooth Receiver is not included.

1.

Atwater Kent / 145

1936; AM/SW; tested and working.



2.

Zenith / K412G

1953; AM band; electrically restored.



3.

Zenith / 6D029

1946; AM band; tested and working.



4. Nordmende / Transista-Export Z032

1962; AM/FM/SW; tested and working.



5.

Trav-ler / 46-37

1956; AM band; electrically restored.



6.

RCA / 8T-2

1936; AM/SW; electrically restored. Has audio input.



7.

Zenith / 6S223

1937; AM/SW; tested and working.



8.

RCA / 5XA

1936; AM/SW; electrically restored.



9.

Arvin / 527

1937; AM/SW; electrically restored. Has audio input & bluetooth.



10.

Unknown make/model

Early 1930's; AM band; tested and working.



11. Telefunken / Jubilee Export

1956; AM/FM; electrically restored. Has audio input.



12.

Philco / 41-226

1941; AM/SW; electrically restored.



13.

Zenith / 6G038R

1946; AM/SW; electrically restored. Has audio input.



14.

Airline / 14WG-806

1936; AM/SW; electrically restored. Has audio input..



15.

Zenith / 5D011

1946; AM band; electrically restored.



16. Packard Bell / 5A Kompak

1936; AM band; electrically restored. Has audio input.



17.

Remler / 21-3

1932; AM/SW; electrically restored.



18. German Shepard Sculpture Clock

Wind-up clock is working. Cast metal and marble.



19.

Zenith / 5S228

1938; AM/SW; tested and working.



20.

Detrola / 20

Circa 1937; AM/SW; electrically restored.



21. Hallicrafters / TW-1000

1952; AM/SW; tested and working.



22.

Carlton / model ?

Circa 1937; AM/SW; electrically restored.



23.

Emerson / 511

1948; AM band; electrically restored.



24.

Emerson / CR274

1939; AM band; electrically restored.



25.

Silvertone / 9054

1948; AM/SW; electrically restored. Has audio input.



26.

Grundig Majestic / 3192U

1961; AM/FM/SW; electrically restored. Has audio input.



27.

Sparton / 628

1936; AM/SW; electrically restored. Has audio input.



28.

Delco / R-1238

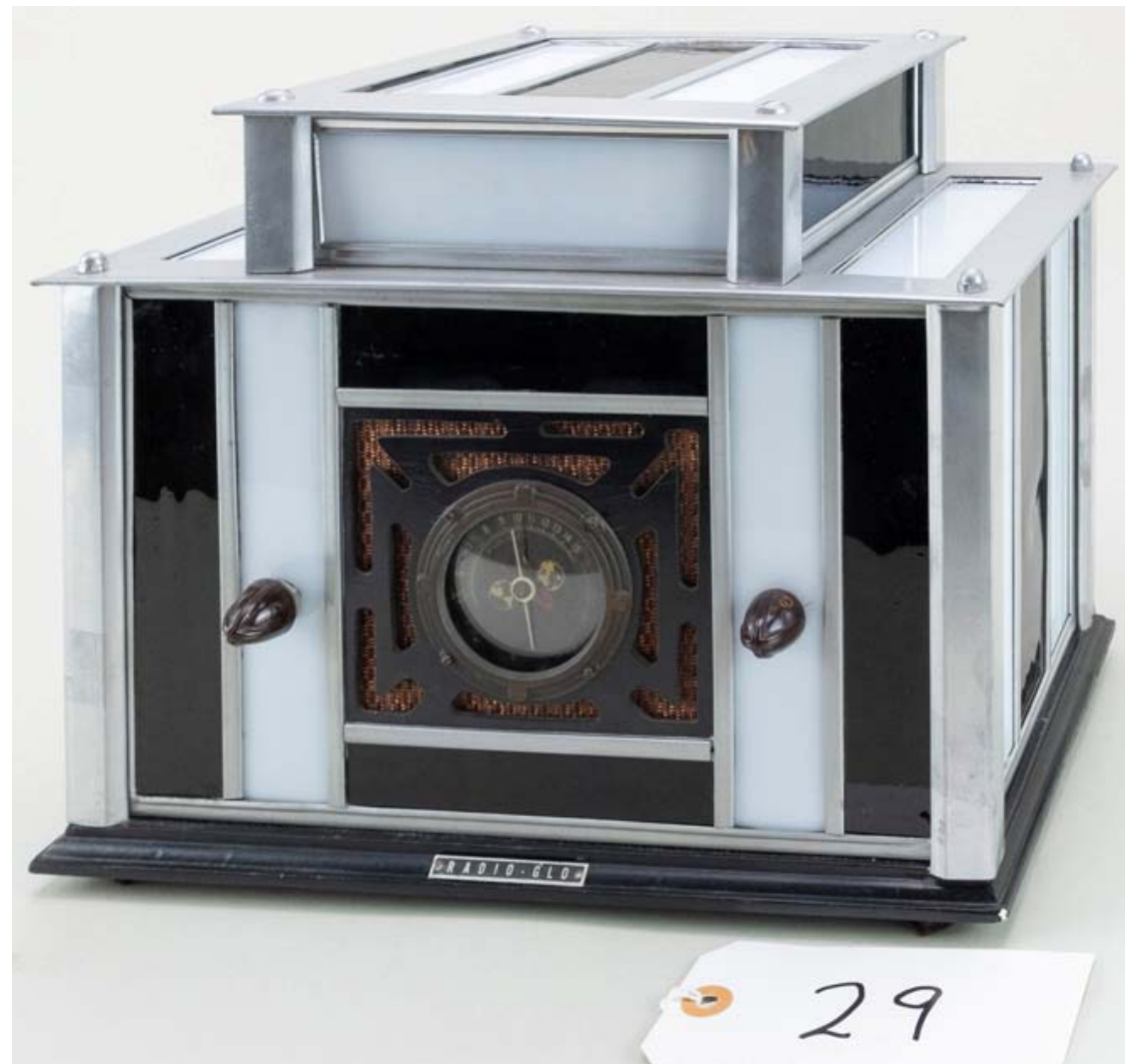
1948; AM band; tested and working.



29.

Radio-Glo / model ?

1936; AM band; cosmetically & electrically restored.



30.

Echophone / s-3

1930; AM; electrically restored.



31.

Patterson / model ?

1938; AM/SW; electrically restored. Has audio input.



32.

Zenith / 6S330

1938; "Stars and Stripes"; AM/SW; electrically restored.



33.

Garod / v Neutrodyne

1925; AM band; comes with good 01A tubes.



34.

Zenith / 7S363

1939; AM/SW; tested and working.



35.

Stewart Warner / 1801

1937/38; AM/SW; electrically restored. Has audio input.



36.

Admiral / 6J2

1953; AM/phonograph; electrically restored.



37.

Zenith / 5S327

1939; AM/SW; tested and working.



38. Marcel-André Bouraine / model ?

Circa 1930; Harlequin dancer lamp, working.



39.

Philco / 51-930

1951; AM band; electrically restored.



40.

Philco / 166

1952; AM band; electrically restored. Has audio input.



41.

Silvertone / 7172

1936; AM/SW; tested and working.



42.

Motorola / 62CW

1951; AM band; clock radio; electrically restored. Has audio input.



43.

Admiral / 5W3X

1951; AM band; clock radio; electrically restored. Has audio input.



44.

Zenith / 5D011

1946; AM band; electrically restored.



45.

Zenith / 5R312

1938; AM band; electrically restored. Has audio input.



46.

KLH / 21

1972; FM; electrically restored.



47.

Philco / 39-17

1951; AM band; clock radio; electrically restored. Has audio input.



48.

Zenith / A1817L

Circa 1951; Television; electrically restored. Matching cart included.





End of Part I



California Historical Radio Society

Presents

Radio Day Live ! – Annual Auction

December 18, 2021

Part 2

49.

RCA / 77DX

1950's; restored and working..



50.

La Salle / model ?

Circa 1931/32; AM band; restored and working.



51.

Airline / 62-148

1934; AM Band; electrically restored.



52.

Zenith / 4F40

1949; AM; portable; electrically restored. Has audio input.



53.

Silvertone / 6050

1946; AM Band; electrically restored.



54. Fisher / Electra V E-46

1962; AM/FM/Phono; stereo console; electrically restored. Has audio input.



55.

Philco / 47-902

1947; AM band; electrically restored. Has audio input.



56. Nordmende / Elektra E138

1960; AM/FM/SW; electrically restored. Has audio input.



57.

DeForest / F5-M

1925; AM Band. Comes with tubes. Speaker coil open.



58.

Monarch / RE-5-1

1960; AM Band; electrically restored.



59.

RCA / 128

1934; AM/SW; tested and working.



60.

American Bosch / 460

1935; AM/SW; electrically restored. Has audio input.



61.

Zenith / 5S119

1937; AM/SW; electrically restored. Has audio input.



62.

Packard Bell / 501

Circa 1949; AM Band; electrically restored.



63.

Zenith / R615Y

1954; AM Band; electrically restored.



64.

Forte Audio / 1

1987; 50W per channel stereo amplifier; working.



65.

Zenith / H511

1953; AM band; electrically restored. Has audio input.



66.

Kadette / L

Circa 1936; AM band; working.



67.

Zenith / A424W

1970; AM/FM; working.



68. Columbia / Viva-Tonal Grafanola 100

Circa 1929; British; 78 RPM record player in metal cabinet; working.



69.

General Electric / A64

1935; AM Band working only; electrically restored.



70.

Sparton / 57K

1936; AM/SW; electrically restored. Has audio input.



71.

Zenith / 5S127

1937; AM/SW; tested and working.



72.

General Electric / E81

1935; AM/SW; electrically restored.



73.

Silvertone / 1955

1935; AM Band; tested and working.



74.

Zenith / 6D815

1948; AM band; electrically restored. Has audio input.



75.

Citra / model ?

1950's; AM/SW; Electrically restored. Manufactured in Spain. Has audio input.



76.

Zenith / 808

1935; AM/SW; tested and working.



77.

Admiral / 4M2A 251

1955; AM band; electrically restored. Has audio input.



78.

Revox / B790

1978; 33/45 RPM linear tonearm turntable with manuals; working.
One LED segment dim.



79.

Zenith / 5S126

1937; AM/SW; tested and working.



80. Crosley / Fiver "Air Cell Receiver"

Circa 1934; AM band; unrestored.



81.

Remler / 6000 "Scottie"

1949; AM Band; electrically restored.



82.

CBS / 5165

1954; AM band; electrically restored. Has audio input.



83.

Canary Audio / M-80

Circa 2017; Power amplifier pair; Working. Has audio input. Comes with NIB WE 300B tubes.



84.

Zenith / 6S229

1937; AM/SW; electrically restored. Has audio input.



85.

Gilfillan / 56B

1946; AM band; electrically restored. Has audio input.



86.

Stewart Warner / 1451

1937; AM/SW; tested and working.



87.

RCA / 143

1934; AM/SW; tested and working.



88.

Philco / 45

1934; AM/SW; electrically restored.



89. Stromberg Carlson / 1500H

Circa 1949; AM Band; tested and working.



90.

Telefunken / Opus 2114

1960; AM/FM/SW; electrically restored. Has audio input.



91.

Zenith / 6S319

1939; AM/SW; tested and working.



92.

Graetz / Super 171W

1953; AM/SW; electrically restored. Has audio input.



93.

McIntosh / ML2

Circa 1970; prototype speaker pair with documentation; working.



94.

Brunswick / 2689

1939; AM/SW; radio table; electrically restored.



95.

RCA / 7-BX-7J

Circa 1956; AM band; electrically restored. Has audio input.



96.

Klipsch / Heresey

2020; 3-way speaker pair with consecutive serial numbers. Working.





End of the Auction

Thank You!