



Radio Day 2021 Auction

Check frequently for updates

1

[California Historical Radio Society](http://www.californiahistoricalradio.com)



Bluetooth Ready / Requires BT Receiver
Many sets are 'Bluetooth ready'. Connect BT receiver to Audio In. BT receiver not included.



1. Philips / Philetta 51
1950-53; AM/LW/SW, electrically restored.



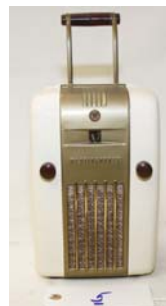
2. Crosley / Fiver Deluxe Compact
1938; AM/SW.



3. Emerson / 578
1946; AM band; electronically restored, Eames cabinet.



4. RCA Victor / 9X561
1950; AM band, electronically restored.



5. Westinghouse / H-125 "Little Jewel"
1945/47; AM band; electronically restored.



6. Crosley lot / Models 51, 50, and V
1923/24; Tuned RF (TRF) receivers. Has good tubes.



7. Telefunken / Jubilate 205
1967/68; AM/FM/SW; electronically restored; has audio input; Bluetooth ready.



Radio Day 2021 Auction

Check frequently for updates

2

California Historical Radio Society



8. Philco / 39-80
1939; AM band.



9. Crosley / 58TC
1948; AM band.



10. Tonfunk / Violetta W125H
1955/56; AM/LW/SW/FM; electronically restored; has audio in; Bluetooth ready.



11. Zenith / 6D030
1946; AM band; electronically restored; Bluetooth ready.



12. Grebe / MU1 Synchrophase
1925; AM band.



13. Stewart Warner / Jewel R-188?
Circa 1935; AM band; electronically restored.



14. RCA / 5T7
1936; AM/SW; electronically restored; has audio in; Bluetooth ready.



15. Radiobell / 437
1936/1937; AM/LW; electronically restored.



Radio Day 2021 Auction

Check frequently for updates

3

[California Historical Radio Society](#)



16. Phillips / B5X43A/74
1964/65; AM/LW/SW/FM Stereo; electronically restored; has audio in; Bluetooth ready.



17. Silvertone / 132-818
1946; AM band; chrome case; electronically restored.



18. Truetone / D2418A
1954; AM band, clock radio; electronically restored; has audio in; Bluetooth ready.



19. Zenith / 4T26
1935; AM/SW.



20. Stewart Warner / Magic Dial R-146A
1936; AM/SW; Electronically restored; has audio in; has Bluetooth.



21. Tradio / L-U6
1947; AM band; coin operated hotel radio; has key.



22. Radiola / III
1924; Tuned RF (TRF) receiver; has power supply and C. Brandes headphones.



23. Decotone / Model ?
mid 1930s; AM band; mirror clad case; electronically restored.



Radio Day 2021 Auction

Check frequently for updates

4

[California Historical Radio Society](#)



24. Atwater Kent / 36

1927; AM; has AK type Y power supply. Radio and power supply work.



25. Remler / 5565

1949; AM band; electronically restored.



26. Philco / 41-226

1941; AM/SW; electronically restored.



27. Arvin / 540T

1951; AM band; electronically restored.



28. Radiola / 103

Speaker; has continuity.



29. Zenith / 6S27

1936; AM/SW; electronically restored; Bluetooth ready.



30. Unknown / .

1925; May be a Lemco or homemade Lemco clone.



31. Stewart Warner / 1231?

1933; AM band.



Radio Day 2021 Auction

Check frequently for updates

5

California Historical Radio Society



32. Grebe / MU1 Synchrophase
1925; AM band.



33. Crosley / 11-105U
1951; AM band; original color and paint; electronically restored.



34. Westinghouse / Aeriola Sr.
Circa 1921; Tuned RF; has good WD-11.



35. Silver / Model ?
Circa 1946; AM band.



36. RCA / 128
1934/1935; AM/SW; electronically restored; has audio in; Bluetooth ready.



37. Heathkit / WA-1
Circa 1951; power supply and mono amplifier; tested, working.



38. Westinghouse / WR212
1936/37; AM/SW; electronically restored; has audio in; Bluetooth ready



39. Klipsch / Heresy
Speaker pair; working. Like new.



Radio Day 2021 Auction

Check frequently for updates

6

California Historical Radio Society



40. Airline / 62-148
1934/35; AM band; electronically restored.



41. Fada / 652 Temple
1946; AM band; has Catalin case.



42. Grundig / Model 87 Majestic USA
Circa 1959; AM/FM; electronically restored.



43. Arvin / 540T
1951; AM band; electronically restored.



44. Saba / FD18
1966/67; AM/LW/SW/FM Stereo; electronically restored;
has audio in; Bluetooth ready.



45. Teeco / Model ?
Mono amplifier; working.



46. Westinghouse / RC (RA and DA combined)
1921; Tuned RF; AM band; has good tubes.



47. Philips / Zingende Plank
Circa 1946; AM band; electronically restored; has audio
in; Bluetooth ready.



Radio Day 2021 Auction

Check frequently for updates

7

California Historical Radio Society



48. Unknown / .
Circa 1925; speaker with ship motif.



49. Elrey / Model ?
Circa 1933/34; AM band; electronically restored.



50. Bendix / 55P3U
1949; AM band; electronically restored.



51. Jackson Bell / 87 Tulip
1931; AM band; electronically restored.



52. Telefunken / Carabela 354
1944/1945; AM/SW; made in Spain; electronically restored.



53. Speaker / Model ?
1920s case; modern speaker; Bluetooth ready.



54. Sparton / Equasonne 301
1929/30; AM band; console;



55. Cossor / 71
1938; made in England; AM/SW/LW; 240 volt set.



Radio Day 2021 Auction

Check frequently for updates

8

California Historical Radio Society



56. DeWald / A502

1946; AM band; has Catalin case; electronically restored.



57. Olympic / 6-502

1946; AM band.



59. Unknown / Model ?

Circa 1931; Small cathedral; AM band; electronically restored.



60. Atwater Kent / 20

1924; AM band; has tubes.



61. Lorenz / Super 200

1937/38; AM/SW/LW.



62. Stewart Warner / 01-5H7

1939; AM/SW; console;



63. Sonora / TNF-60

1939/40; AM band; has 78 RPM phono; electronic restored, turntable works.



64. McIntosh / MC30

Pair of mono amplifiers; working.



Radio Day 2021 Auction

Check frequently for updates

9

California Historical Radio Society



65. Philips / 208U
1943/44; AM/SW/LW; electronically restored.



66. DeWald / A501
1946; AM band; has Catalin case; electronically restored.



67. Philips / Capella 735/4e/3d
1955/56; AM/LW/SW/FM; electronically restored; has audio in; Bluetooth ready.



68. General Electric / 115
1954; AM band; electronically restored; as audio in; Bluetooth ready.



69. Philips / BD294 U
1949/50; AM/SW/LW.



70. General Electric / S-22
Circa 1932; electronically restored.



71. Philips / Philetta B2D23A
1963/63; AM/SW/LW/FM; has audio in; Bluetooth ready.



72. E.H. Scott / Allwave 23 in Tasman cabinet
1934/35; AM/SW; console; electronically restored; has audio in; Bluetooth ready.



Radio Day 2021 Auction

Check frequently for updates

10

California Historical Radio Society



73. Philips / 209U-15
1946; AM/SW/LW.



74. Motorola / 66C Golden Voice
Circa 1956; AM, clock radio; electronically restored, on-off switch on rear panel; has audio in, Bluetooth ready.



75. ELAC / 10H Microcort
Turntable, 16/33/45/78 RPM; has 45 adapter and dust cover.



76. RCA / 77-DX microphone
Circa 1950; Polydirectional, directionality is switch selectable; cloth cover; restored, working.



77. Zenith / TL405
Circa 1955; AM band; AC or battery; electronically restored; has audio in; Bluetooth ready.



78. Silvertone / 4786
1937; AM/SW; console; teledial tuning; electronically restored; Bluetooth ready.



79. Philco / 41-300X
1940/41; AM/SW; console; working.



80. Bang and Olufsen / Beogram 4004
Turntable, 33/45 RPM; has linear tracking; tested working.



Radio Day 2021 Auction

Check frequently for updates

11

California Historical Radio Society



81. McIntosh / 2300, C32, MR78

Includes 2300 power amplifier; C32 preamplifier; and MR78 tuner; has owners manuals; tested working.



84. Zenith / 6D615

1942; AM band; electronically restored; has audio in; Bluetooth ready.



85. Motorola / 6T15N

1959; AM band.



86. Klipsch / Heresy

Speaker pair; working.



87. General Electric / H-530

1939; AM band; Machine Age design.



88. York / TR-110

1965; AM/FM; has box an original packing



89. General Electric / FD-62

1937; AM/SW.



90. Philips / B3X66U

1956; AM/SW; electronically restored; has audio in; Bluetooth ready.