

As Bart Lee notes, the variable tuning capacitor rotates, and the simplest tuning indicators are round. This gave rise to designs for several round radios in the 1930s. With the indicator mounted on the periphery, more room is provided for a wider maximum bandspread. This would have been very useful in crowded European bands.

### **EKCO & RADIALVA**

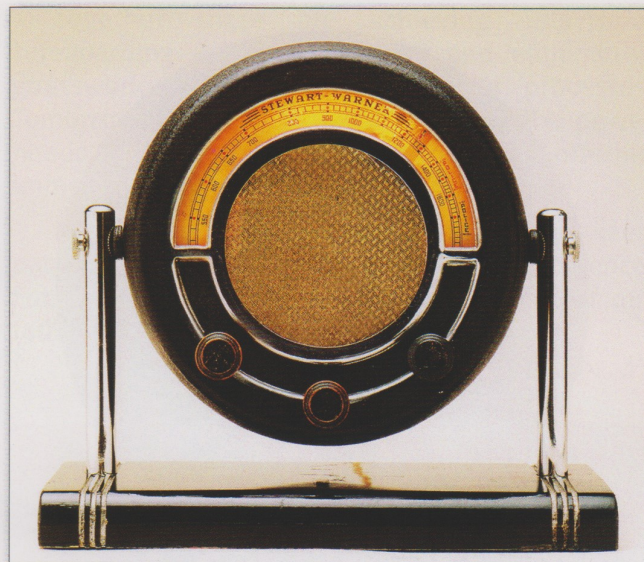
As it so happens, our next radio is of European origin. The Round Ekco A22 radio is featured on the bottom of the previous page. E. K. Cole & Co. made several versions of this radio including AC76, AD65 and the AD36.<sup>3</sup>

The French company Radialva created a colorful radio and coordinated speaker pair called the "Super Boum" that carried out this round radio theme. They were offered in a variety of colorful combinations and materials including Plaskon and Bakelite. The images of the radio and speaker pair in the next column were discovered by Scott Robinson of CHR.S.

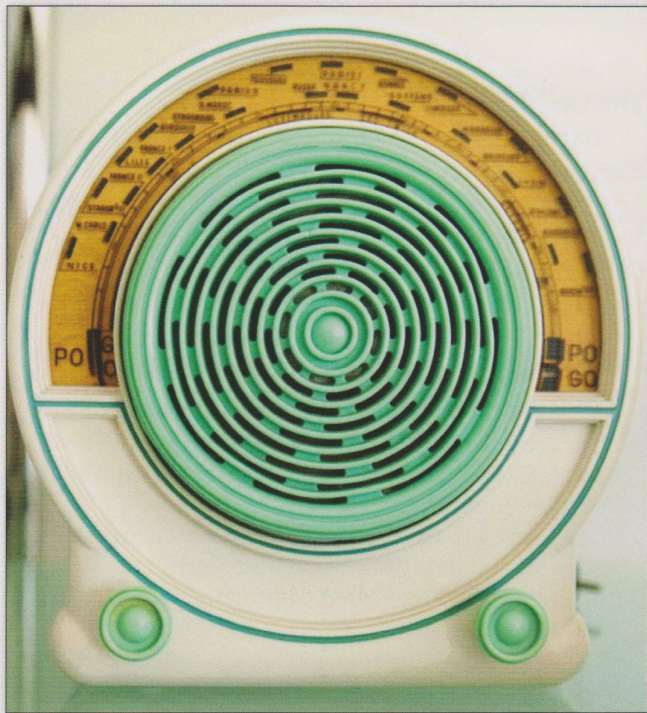
### **Stewart Warner**

Back in America, Stewart Warner got into the act in 1936 with the model R-192, nicknamed 'The Good Companion.' This four-tube set was not a great performer by some accounts, but was probably purchased for its unique design rather than as an outstanding receiver.<sup>4</sup>

To give you some idea of how well this particular design has caught the imagination of the public, there is even a 3D model that is being sold for computer simulations and games made to look exactly like the original. To view the model, go to the website <https://www.cgtrader.com> and search for Stewart Warner.



*Stewart Warner model R-192*



*The Radialva "Super Boum" Matched Radio and Speaker Set*