

OFFICIAL JOURNAL

1976
VOL. II WINTER 1977 NO. 2

CALIFORNIA HISTORICAL RADIO SOCIETY



Mr Radio Man

(Tell My Mammy To
Come Back Home)

Words by
IRA SCHUSTER
JOHNNY WHITE
Music by
CLIFF FRIEND

Presented by
STUART BARRIE
Executive Director

Published by
LEO FEIST, INC. NEW YORK

CALIFORNIA HISTORICAL RADIO SOCIETY INC.

635 Phelan Avenue
San Jose, CA. 95112

PRESIDENT: Norman Berge

VICE-PRESIDENT: Dave Brodie

VICE-PRESIDENT: Peter Brickey

SECRETARY & LEGAL COUNSEL: Eugene Rippen

TREASURER: James Cirner

HISTORIAN: Larry LaDuc, Jr.

JOURNAL EDITOR: Kenneth Miller

For membership correspondence address the Treasurer, James Cirner, 13366 Pastel Lane, Mt. View, CA. 94040. Articles and non-commercial ads for the journal should be submitted to the Editor, Kenneth Miller, 1950 Cooley Avenue, Palo Alto, CA. Historical data for copying or donation should be sent to the Historian, Larry LaDuc, Jr., 484 Arleta Avenue, San Jose, CA. 95128.

THE SOCIETY

The California Historical Radio Society is a non-profit corporation chartered in the state of California, and was formed to promote the interests of California vintage and antique radio enthusiasts. Our goal is to provide the opportunity to exchange ideas and information on the history of radio (in California especially.) We hope to be of service to those interested in such areas as collecting of equipment, literature, and programs, etc., and restoration of early gear. Regular meetings and swap meets are scheduled at least twice a year in the San Jose area, with additional meets planned for Southern California when interest justifies (soon we hope!) We now have 100 members from throughout the state (and a few from out of state.) As we grow so do our benefits to our members. Tell your friends about us!

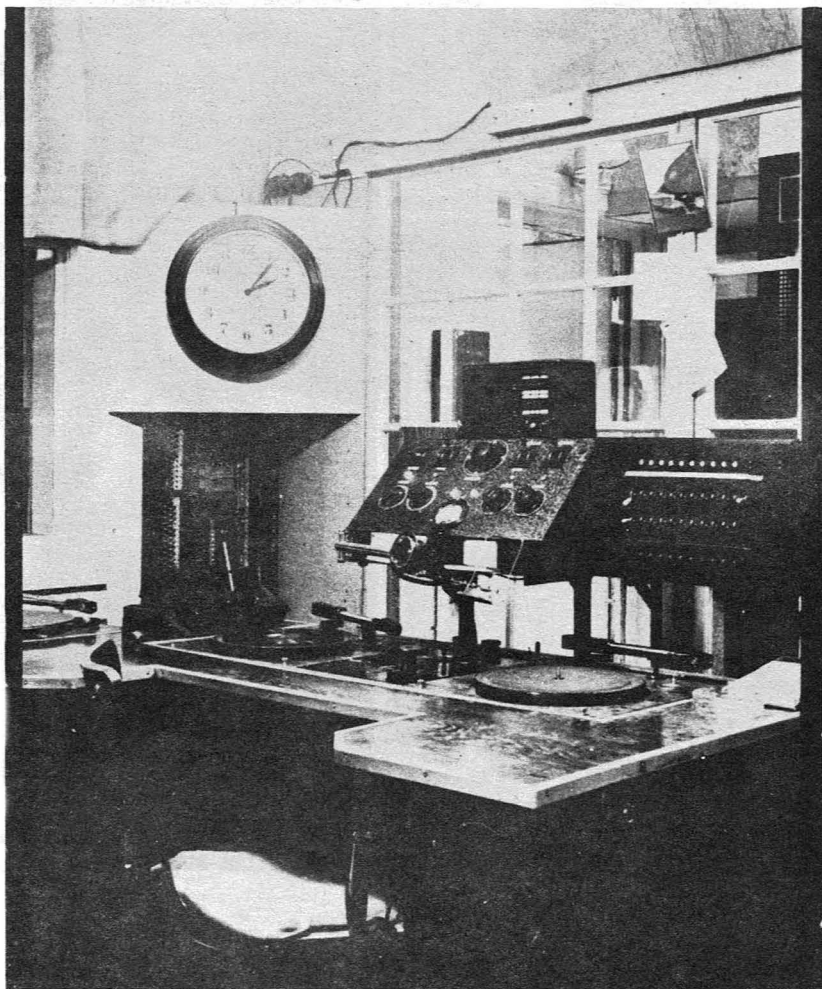
THE JOURNAL

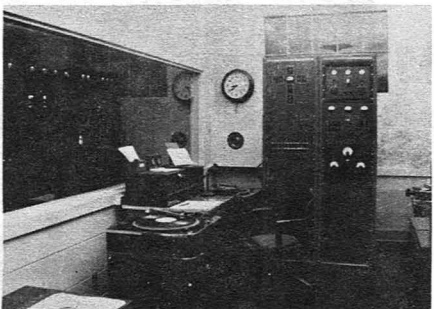
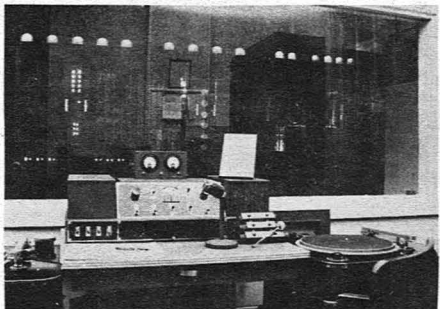
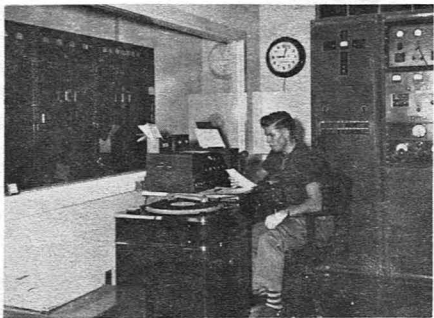
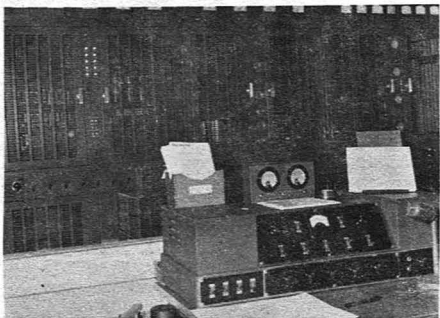
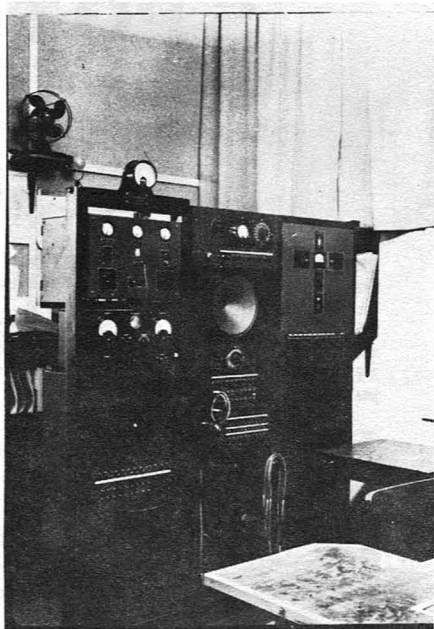
The Official Journal of the California Historical Radio Society is published quarterly and is furnished free to members. Our first issue was published in September 1975 and copies of early issues are still available; the first issue is \$2.00, others are \$1.00 each. Articles for the Journal are solicited from all members. Any items of interest, such as restoration hints, information on early radio broadcasts and personalities, anecdotes about the pioneers, etc., will be gratefully accepted. anyone interested in editing a section of the magazine on a full time basis should contact the editor. This can relieve our editor of a great deal of work and insure maximum attention to your area of particular interest.

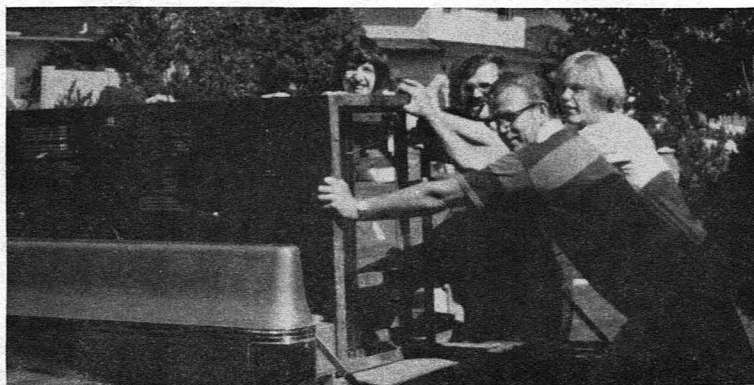
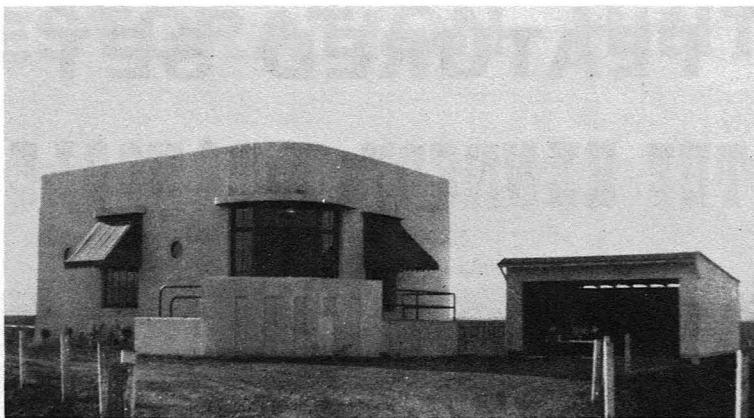


STATION SPOTLIGHT **KQW**

The California Historical Radio Society recently obtained the following photos of KQW in the 1930's. The earlier photos were taken in 1932 and the rest a few years later. Our club has been fortunate enough to obtain several of the pieces of equipment, shown in the photos, including the complete transmitter used in 1932 and the audio console shown in the later photos. Anyone for putting it back on the air?







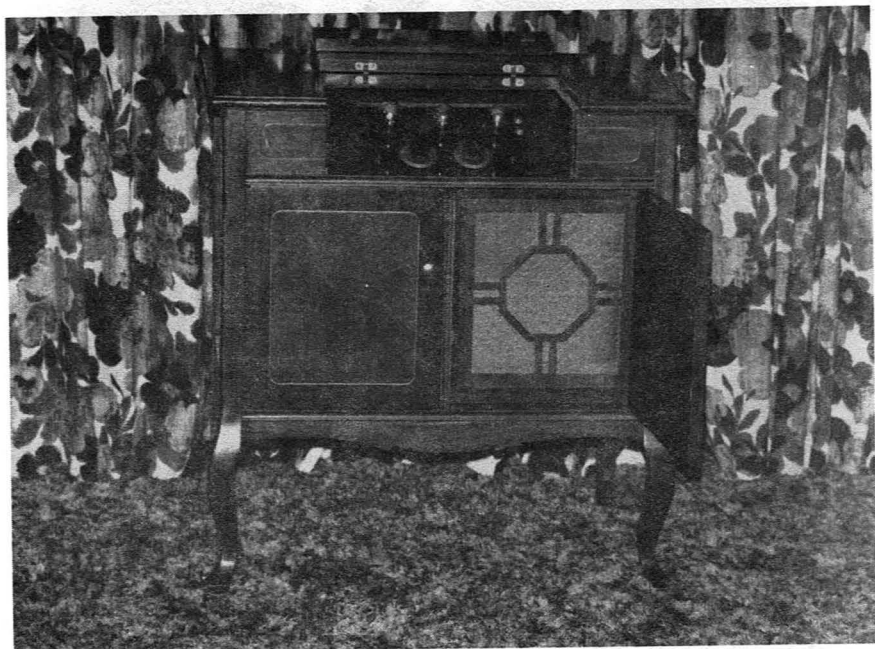
CLUB PRESIDENT NORM BERGE AND HELPERS LOAD RECENTLY
ACQUIRED KQW TRANSMITTER ONTO TRUCK



LARRY LADUC HELPS DISSAMBLE THE TRANSMITTER FOR SHIPPING

FEATURED SET

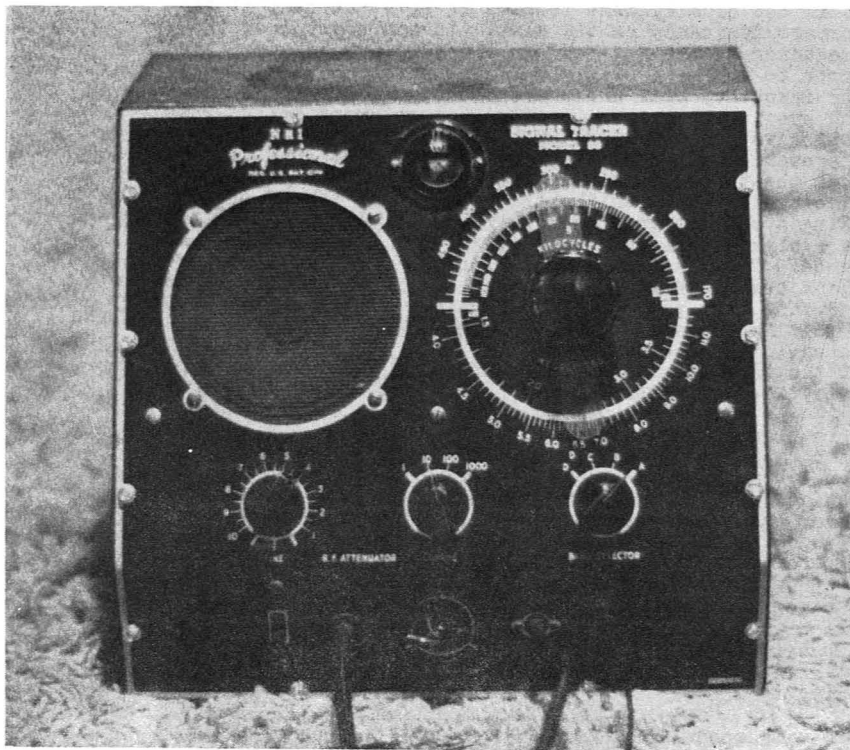
THE KENNEDY V CONSOLE



Bill Wakefield, 712 Huecos Dr., San Jose, CA 95123

This was probably as close to a 'flick of a switch' type broadcast receiver marketed in 1923. The chassis is a standard Kennedy V regenerative set with two stages of audio for a total of three tubes. The build-in speaker resides in the lower right side of the cabinet and is a rectangular wooden horn. The batteries were placed in the lower left side of the unit. Antenna and ground binding posts are on the rear of the cabinet, the only external connections required! Truly remarkable for its day. Additionally, cabinet work is what you would expect for the period and discriminating owner. First class. Price when new, about \$800.

RESTORATION HINTS



RADIO INSTRUMENT TECHNICAL REPORT

Signal Tracer - National Radio Institute Mod. 33

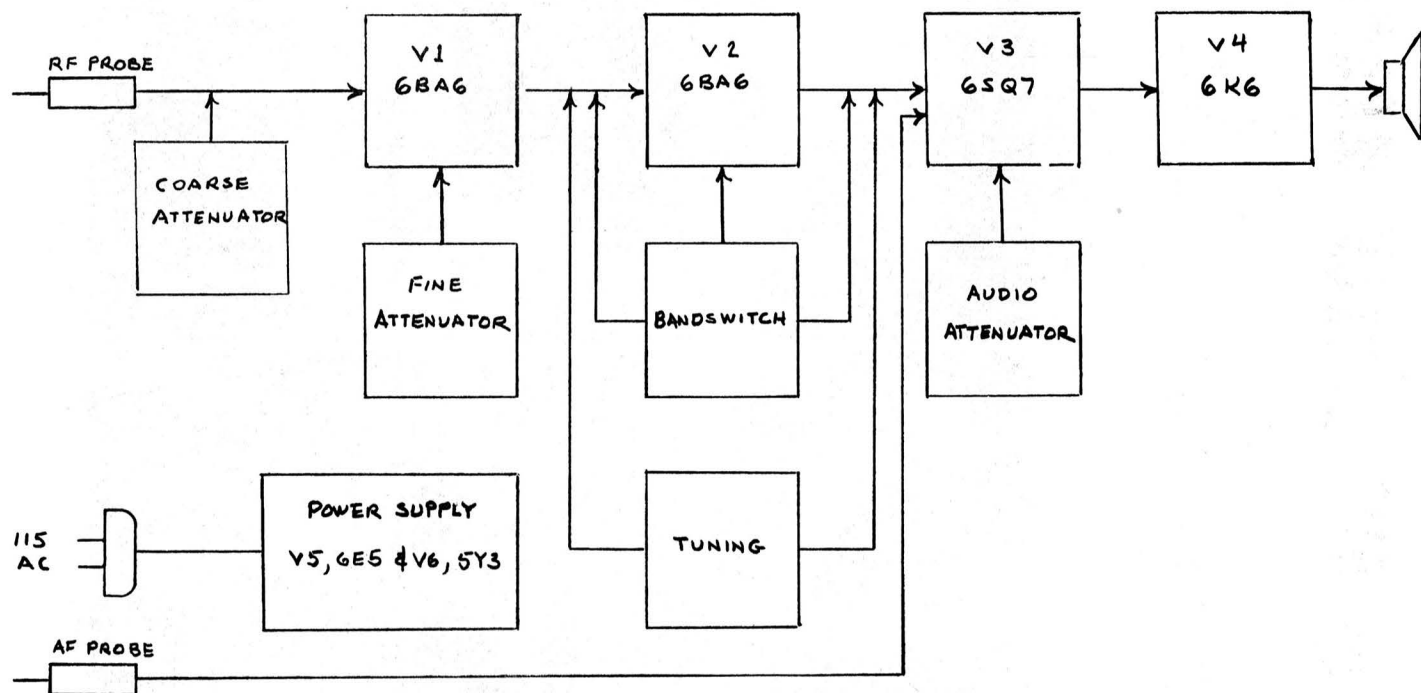
A few weeks ago I was tromping around a flea market when I spotted an unusual looking signal tracer. At first I was not sure what it was. I have never seen a tracer with an adjustable frequency dial on it. The owner only wanted \$5.00 for it so I decided to take a gamble it might be useful to me. It turned out to be a real winner! The tracer has two test probes, AF & RF probe. They are connected to AF amp. and RF amp. with a selector switch. The AF section is a conventional audio amp. With the AF test probe you trace the audio section from detector of radio, stage by stage. Also there is an AF gain control on the tracer. The RF section of this tracer is unusual. The RF frequencies are divided into four bands covering 170 KHZ to 16 MHZ. If you are going to troubleshoot an inoperative super-hetrodyne with an IF frequency of 455 KHZ, you set the RF band switch to the correct frequency range and set the dial

for 455 KHZ. I begin by touching the RF test probe to the first IF grid after the first IF transformer. Adjust the radio tuning dial for a station signal. If you hear a signal, adjust the frequency dial of your instrument for maximum volume and observe that the tuning eye is at minimum closure. You can tell if the IF stage you are looking at is out of alignment because it will not peak at the correct frequency on the dial. If you don't know the IF frequency of the set you are checking out, connect the RF probe to the grid or plate of one of the IF stages. Adjust the frequency dial and where the signal peaks and the tuning eye is at minimum, read your instrument dial. This will give you the approximate IF frequency. Typical IF frequencies are 175, 260, 455, and 465 KHZ. Due to the fact that the tracer is tuned to the IF frequency you will get a nice clean signal unlike that you get in the IF section using a conventional signal tracer. A conventional tracer is a high gain audio amp. with a 1N34 diode in the test probe. This instrument has plenty of gain allowing you to check the antenna section, etc. There is an att. RF switch and fine att. pot. to control gain. If the signal is normal at the first IF grid, you check the first IF plate and go on to the second IF and make grid and plate checks, up to the detector stage. Of course, if you lose the signal it's time to go hunting!

This signal tracer is really a good quality T.R.F. radio when the RF atts. are tuned out. All you have to do is connect an antenna to the RF test probe and you have a radio. You can pick up the broadcast band and some shortwave on other bands. To determine if the RF section of the radio is working properly, you can change the tracer band switch to broadcast band. Tune the tracer to a real strong station such as KLOK, 1170, San Jose. Touch the RF probe to RF section of tuning capacitor of radio under test. The signal will drop substantially. Now adjust the radio tuning capacitor. When you match the frequency of KLOK you should hear the station on the tracer again if it's working properly.

The same procedure works for checking out battery sets such as an AK 20 which is a three stage T.R.F. RF stage one of AK 20 when matched with station that tracer is tuned for will give a certain gain through the tracer. The second RF stage will give more gain and the third stage even more gain. This will confirm that all RF stages are working properly. Of course, AF probe would be required to check output of detector stage and audio stages. If you don't have a strong station available, use a modulated RF signal generator tuned to a frequency on the broadcast band.

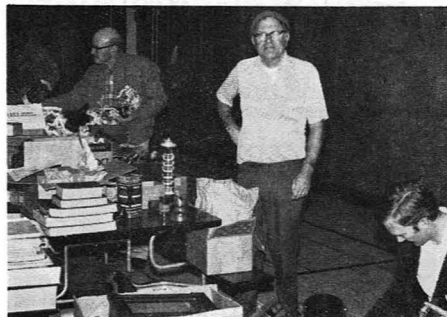
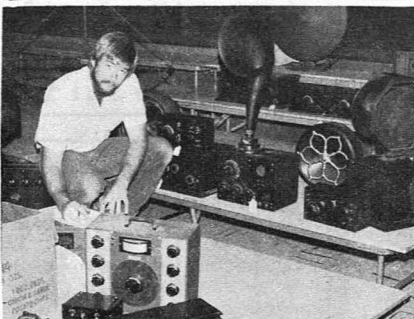
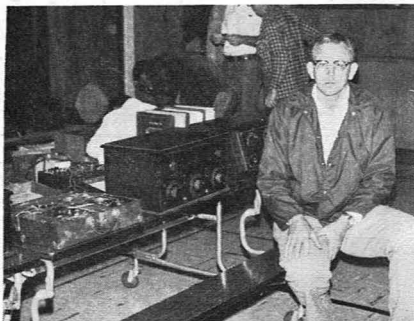
I am guessing that my tracer was a kit supplied to students taking the National Radio Institute radio repair course in the 1940's. In fact, whoever wired this kit up made two errors so it didn't work properly. All that I received with mine was a schematic, no instruction manual. I am sure that there are other uses for this instrument that I haven't thought of. Would appreciate hearing from anyone on the subject and would sure like to get the manual or a copy of it. I suggest that all radio collectors who enjoy repairing their own radios keep their eyes peeled for this type of signal tracer or an equivalent type. Good Hunting! Jim Cirner, 13366 Pastel Lane, Mt. View, CA. 94040.

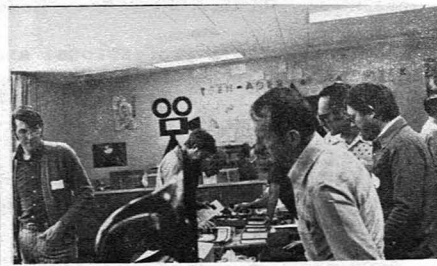
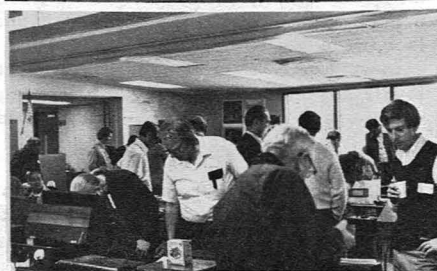
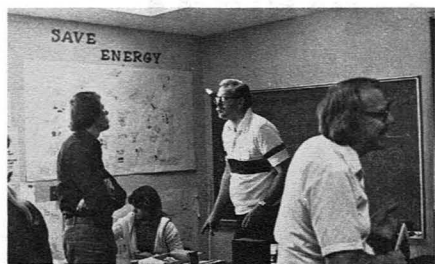


BLOCK DIAGRAM OF NRI MODEL 33 SIGNAL TRACER

FALL AND WINTER MEETS

Our last two swap meets in San Jose were highly successful as the following photos illustrate. Over 100 people showed up for our winter meet. Look for details of a joint northern/southern California meet coming up soon.





COLLECTOR SPOTLIGHT

PETER BRICKEY, COLLECTOR

By Paul Giganti, W6GVY

Peter Brickey's collection includes many categories; however, a visit to his museum would prove that he specializes in exotic and unusual console radios, both battery and electric types. The Brickey Museum is situated in a beautiful wooded area in the hills above Woodside, California. Inasmuch as it is in a quite secluded spot, it is advisable to phone ahead for an appointment before planning a visit. The first time I went there I needed a good map, and a blood hound to find it. Since Kathy, his wife, is quite a collector in her own right, no animosity toward visiting collectors, however subtle, can be expected. The museum is housed in a lovely log cabin which Peter has completely refurbished and remodeled, with considerable help it might be added, from Kathy who could be termed a frustrated architect.

It is not practical to show all the consoles in Peter's collection, so the photos will be limited to the more interesting models. Figure 1 shows our featured collector, Peter Brickey, with the Grebe Desk Radio. It is electric and the model number is unknown. The style is from the Governor Winthrop era. Figure 2 shows the same radio with the desk compartment open.

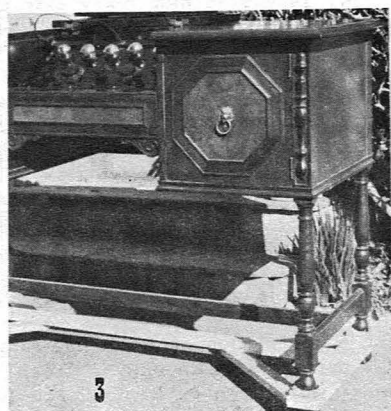
Figure 3 shows the Zenith 40A. This console, in mint working condition, was found in the Los Angeles area and is probably Peter's favorite piece. Figure 4 shows the Brunswick Model BR-160 Radio-Phono Combination. Figure 5 shows the Kennedy XV, 5 tube battery radio in the very rare Jacobean console. It is in mint condition. This unit came from a Hollywood home, and perhaps belonged to a movie magnate. Most likely, this is the rarest radio in the entire collection. It is built of American walnut with artistically matched paneling. It sold for \$775 in 1923 and very few were made. In their literature, Kennedy classified it as a 'furniture model'.

Peter has quite a professional and technical background; presently he is employed by Hewlett-Packard of San Jose, as a computer systems analyst. He has traveled all over the world trouble-shooting equipment for Hewlett-Packard. Kathy is a school teacher. Peter's forte is restoring the old radios, from basket cases to factory-fresh look in a short time. At this time he has many projects "in the works" which makes the museum a constantly changing collection. Peter is also into Juke Boxes and fine old clocks, which items could constitute an article by themselves.

HINTS

Jewelry supply houses have brass wire brushes that work great to brighten up dull nickel plated items. (also Brookstone of New Hampshire, ed.) Ray Harland, Escondido, California.

A low voltage coin cleaner can sometimes remove the green discoloration on brass dial plates. (Product sold by Edmund Scientific Co.) White "Putty Stik #900 is good to white in the old dial markings. (Any hardware or paint store.)



THE COLLECTOR'S ADS

FOR SALE DCC wire, 13 ga, 14 ga, 17 ga and 19 ga, \$2.00 per pound plus shipping.

WANTED Chassis for a Ware model TU. Want to correspond with the owner of a TU. Ray Harland, 2602 Mary Lane, Escondido, CA 92025.

FOR SALE S C R 59 Airplane Receiver \$200, B C Crystal set \$150, Eagle Neutrodyne \$100, Federal D-10 \$135, A K-20 (large) \$65, Magnavox T R F \$50, A K Horn \$75, also, many other sets and speakers. Paul Giganti, 415-593-4723.

FOR SALE 1924 Bosch Amberola, 1925 Arborphone. Both similar to photos in 'Vintage Radio', \$75 each. QST 1926-1964 plus many extras, offer. CQ 1946-1964 plus extras, offer. Bill Wakefield, 712 Los Huecos Drive, San Jose, CA 95123. Phone 408-226-7349.

FOR SALE (or trade) RCA Regenoflex, Pathé 5 tube slant front TRF with original McCullough 401 tubes and wiring. Crosley slant front Trirdyn Special. Browning Drake with complete factory kit bakelite chassis and National type B dials. All sets in fine shape. Need tips on plugging holes in bakelite panels. C Byrnes, 20975 Valley Green Drive, Apt. 290, Cupertino, CA 95014, 408-255-5875.

FOR SALE (or trade) Several hundred radios, speakers, etc. Deforest, Grebe, Federal, Tuska, Paragon, Kennedy, etc. Photos available, send 50¢ in stamps.

WANTED Early Grebe CR equipment. Information on Radio Instruments Co, Inc. Washington, D. C. model JM-7 dated 1922 with plug in DX RF transformers. These same transformers were used by Radio Specialty Shop, Oakland, CA. Glen S. Streeter, 26008 Crenshaw Blvd. #106D, Torrance, Calif. 90505

FOR SALE Two 304TL transmitting tubes, Pocket ammeter 0-30 amps with chamois pouch, pocket voltmeter 0-50 volts (22.5 & 45 markings), Western Union block sounder, Weston models 301 millimeter 0-100, 425 millimeter RF 0-100, 301 type 40 decibels inf. -0-6, transmitting variable condenser with RF indicatio light built in, Vol 1 Radio Diagrams 1926-1938 Beitman (total 240, missing 7-16, original printing), 1948 E. F. Johnson General Products Catalog (16 pages plus 8 pages), Textbooks: 'Radio Telephony for Amateurs 1922', Ballantine, 'Robison's Manual of Radio Telegraphy & Telephony 1918', 'Wireless Telegraphy' (radio) 1915, 'Practical Radio Telegraphy' Wilson & Hornung 1928, Magazines 'Radio News' Dec 1926, May 1927**, Jan-Feb-Mar-May-Dec 1928, Feb-Mar-Mar*-May 1929. *good to fair, **very good - cover missing. 'Radio Craft' Sep 1935, Oct-Nov-Dec 1945, Feb-Mar-Apr-May-Jun-Aug-Sep-Oct-Nov 1946, Feb 1947.

WANTED 'Radio News' Jan-Feb-Mar-Apr-May-Jun 1923, Jan-Feb-Mar-Jun 1924, Aug-Sep-Nov 1929, Jan-Jun-Jul 1930, Jun-Jul-Aug Dec 1931, May-Jun-Dec 1932, Jan-Apr-Jun-Jul-Aug-Nov 1933, Feb-May-Jul-Aug-Dec 1934.

L. P. Rayner, 5512 North 71st Place, Scottsdale, Arizona, 85251

WANTED 1 All-American type R-120 10,000 meter sharp-tuned r. f. xfmr. and 1 type R-130 r. f. coupler to complete set. Early tubes, good or bad. B. T. Wooters, 8303 E. Mansfield Avenue, Denver, Colorado 80237.

WANTED Radiola III Case. Allan Bryant, 4251 Blewess Street, Fremont, California. Phone 651-1458.

FOR SALE (or trade) Admiral 1949 vintage 7" TV set. "Signal" 1920's vintage short-wave battery set.
WANTED 7JP4 picture tube. Early scanning disc TV equipment. Ken Miller, 1950 Cooley Avenue, Apt. 6204, Palo Alto, California 94303. Phone 323-6792.

FOR SALE From Majestic 91-B 884 rectifier tubes, chassis & parts. Hickok tube tester and General Radio Co power supply type 1203-B which has adapters to furnish 5VDC @ 1.25 amps, 90VDC @ 35 ma. and 50VDC @ 5 ma.

WANTED Cabinet for Majestic 90 and parts for a Kadette International 1931. Sue Coulter, Box 11, 1000 West Columbus Ave, Bakersfield, CA 93301

WANTED Old meter catalogs (repros OK) and meters of any kind pre-1920. Indicate mfg. mod. ser.no. cash & condition. Old lamp bulbs with tip top. Leonard Cartwright, 10863 Northfield Square, Cupertino, CA 95014

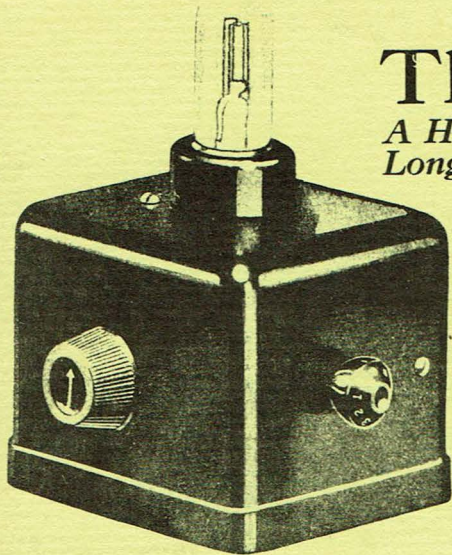
WANTED Two ERLA audio transformers, two NR6 Freed-Eisemann audio transformers (F E no. 376). Schematic for Erla Monodic S-51. Two variable capacitors for Bremer-Tully Counterphase. First stage transformer for Radiola IIIA. Dave Brodie, 315 Cotton St, Menlo Park, CA 94025

WANTED Radios from 1940-1950, all must look and operate like new. Airline 84BR-1065B 1946, Andrea P-163 1947, Automatic 'bed lamp radio' 1940, Emerson 636A 1950, G.E. 250 1946, Mitchel 1250 or 1251 1948*, Motorola 65L11 or 65L12 1942*, Motorola A-1 1942*. Philco 49101 1949. RCA 66BX 1946*, RCA 8BX6 1947*, RCA 8BX6 1948*, RCA RC1046A/B274 1948, RCA 551 or 552 1950, RCA 25BP 1941, Silvertone 8005 1948, Silvertone 101822A 1949. Zenith 66601Y 1948. *Most wanted. Mike Hanhe, 1036 South 15th Ave, Wausau, Wisconsin

FOR SALE (or trade) Radiola Superheterodyne 1929 portable, good condition, works, with six '99s \$95.

WANTED Base and driver for Magnavox horn, bell is 14", decal on lower lip, possibly R-3 or as seen in 'Vintage Radio' on page 203, bottom row center. Pot metal section from base of A K model L horn, or complete base. Panel for Music Master model 60 in good condition or an old junker 60 with good panel, Cabinet for Majestic model 130A. Wish to buy Res. type receivers. Rod Clay, 1694 Milroy Place, San Jose, CA 95124.

WANT ADS ARE FREE TO ALL MEMBERS OF THE CALIFORNIA HISTORICAL RADIO SOCIETY. SUBMIT ADS TO THE EDITOR, KENNETH W. MILLER 1950 COOLEY, APARTMENT 6204, PALO ALTO, CA 94303. DUE TO THE NON-PROFIT STATUS OF OUR SOCIETY, WE CANNOT ACCEPT ADS OF A COMMERCIAL NATURE.



The Crosley PUP

*A Highly Selective
Long Distance Receiving Set* **\$9⁷⁵**

A genuine Armstrong re-
generative double circuit

Here, without question, is the biggest value ever offered in radio history—a one tube set with a radius of 1500 miles or more on head phones under average conditions! The PUP is a genuine Armstrong receiving set, employing the double circuit to reduce radiation to a minimum and to provide a degree of selectivity that enables you to tune through local stations without difficulty.

Everyone—you, your mother, father, family and the cook should have one. Half as big as a shoe box and conveniently portable. A permanent, substantial, quality product throughout, phenomenally priced only because of its simplicity and Crosley's tremendous manufacturing facilities. The price, \$9.75, does not include accessories.

A Pair of New Cabinet Models

Radical Improvements in Two Popular Long Distance Sets

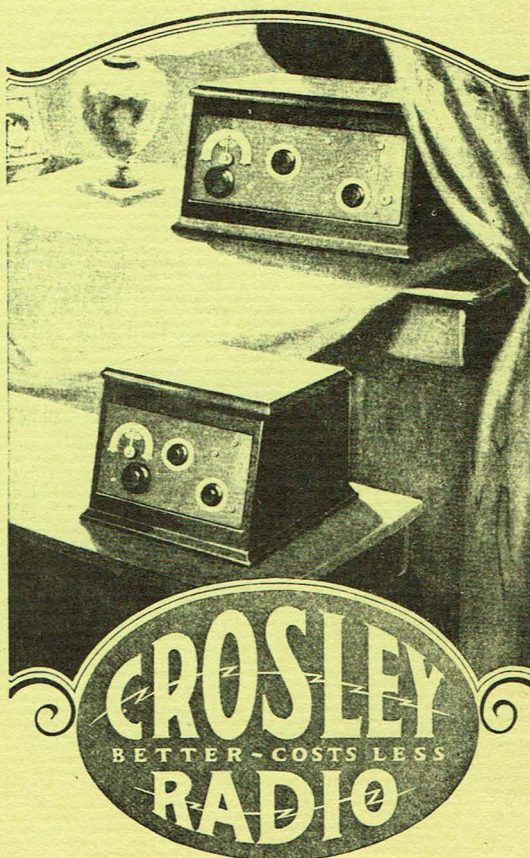
These new low priced cabinet receiving sets—51 Special De Luxe and 52 Special De Luxe—embody radical improvements in performance and appearance.

Greater selectivity, sharper accuracy of control and improved receptivity have been achieved by the use of a new worm type tickler, the new Crosley vernier plate condenser and the double circuit, thus reducing radiation to a minimum.

Both are genuine Armstrong regenerative receivers, the 51 S. D. with one stage of audio frequency amplification; the 52 S. D. with two.

Both cabinets are attractive in design, handsomely proportioned to hold necessary batteries, mahogany finished and have sloping panels.

Both are true long range receivers—easy to tune—easy to enjoy and easy to pay for. Crosley 51 S. D. two tube \$23.50—Crosley 52 S. D. three tube \$32.50. Both without accessories.



FROM A 1925 ADVERTISEMENT